

92-4993 2014

Göte
borg
2014J



BULLETIN 2

WELCOME TO EUROMEETING

22nd AUGUST - 24th AUGUST

2014



The Swedish orienteering federation (SOFT), Göteborg-Majorna OK (GMOK) and Frölunda OL (FOL) welcome you to Eurometing to be held in Gothenburg 22 - 24 of August 2014. The competition will be organised in a cooperation between GMOK and FOL and will be in parallel with the three days event Göteborg O-meeting. Eurometing is also an ideal preparation for the World Orienteering Championships 2016 and is open to National teams. The national team can comprise of up to 12 men and 12 women runners, selected by each national orienteering federation.

Programme of Events

Descriptions of the terrain and existing mapping can be accessed by clicking the location name below. Eurometing 2014 will consist of three individual races:

Middle distance:	Friday 22 nd August	Arena Gröna bur (afternoon/evening event)
Sprint distance:	Saturday 23 rd August	Arena Guldhedsskolan, Gothenburg
Long distance:	Sunday 24 th August	Arena Gröna bur

Eurometing athletes will have their own start block at all events. Details will be presented in the next bulletin.

Competition Organisers

Eurometing Event director is Olof Halvarsson. To contact the Event director for further information please send a mail to olofhalvarsson@gmail.com. Course planners will be Ola Wallinder and Anders Höije from GMOK and Anders Arfwedsson from FOL. SOFT Event adviser is Tommy Eriksson.

Venue

Eurometing will take place in Gothenburg and in Gröna bur, located 30 kilometres south of Gothenburg. See map below where the competitions will take place. The competition areas are abandoned, see the links.
<http://goteborg-o-meeting.se/goteborg-o-meeting-2014/avlysningar/>



Training camp for WOC in Sweden 2016

There will be an official for WOC 2016 in Strömstad/Tanum on the 25- 31st of August 2014. The training camp will provide a good insight of the wonderful and special terrain of northern Bohuslän. The trainings will be varied with both specialized technology training sessions and “regular” courses. Course setting for the trainings will be done by the course planner for WOC2016. The week concludes with two competitions in southern Bohuslän.



Questions and registration are made to training@woc2016.se

Booking of accomodation and questions about accomodation please contact woc@greenyard.se A more specific information with training schedule, price etc. will be presented on the webpage www.woc2016.se/en/ in May 2014.

Transportation to and from Gothenburg

Gothenburg is easy to reach with direct flights or with car, train and ferries.

Accomodation

The Euromeeting 2014 Event center will be at Scandic Mölndal. At the Event hotel there will be Team meetings for the coaches the evening before each event. The event director and the course planner will be present for information and questions.

Standard room incl breakfast:

- Single room 650:- per room/night
- Twin room 750:- per room/night
- Triple room 950:- per room/night
- Quad room 1150:- per room/night

Superior room incl breakfast: Possibility to make own teal/coffee in the room.

- Single room 850:- per room/night
- Twin room 950:- per room/night

Superior Extra incl breakfast and bathrobe. Possibility to make own teal/coffee in the room.

- Single room 950:- per room/night
- Twin room 1050:- per room/night

The price includes breakfast buffet, free parking and free access to our jacuzzi, sauna and gym.

Food and Beverage

Scandic Mölndal (webpage: www.scandichotels.com/molndal) offer dinner buffet for only 119 SEK/person and day. Including one main course, salad, bread and ice water. Must be booked in advance. Please use booking reference **BMAT210814**.

Quote **BEUR210814** (only room) or **BMAT210814** (room and dinner) upon reservation. You can mail meeting.molndal@scandichotels.com or call +46 31 7514300. Last day to cancel the reservation is 1st of August to avoid late cancellation fee. Last day to book is 14th of August or as long as we have rooms available. The offer is valid 21-24 of August.

Scandic

For other hotel alternatives please log in to Gothenburg visitorcenters website: <http://www.goteborg.com/en/Tourist-centre/Tourist-centre/> or contact them by mail at the address: turistinfo@goteborg.com

Competition Maps

All maps are updated in 2013/2014.

<i>Event</i>	<i>Location</i>	<i>Scale</i>	<i>Contours</i>
Middle distance	Gröna bur/Hagryd Dala	1: 10 000	5m
Sprint distance	Guldheden/Chalmers	1: 4000	5m
Long distance	Gröna bur/Hagryd Dala	1: 15 000	5m

Gröna Bur/Hagryd Dala - Part of the map was used for the Swedish championships in middle distance 2013.
Guldheden/Chalmers - The map will be used for the sprint distance. Part of the map was used for the Swedish championships in sprint distance 2013.

Sprint

Map: Guldheden/Chalmers, below is a clip from the map.

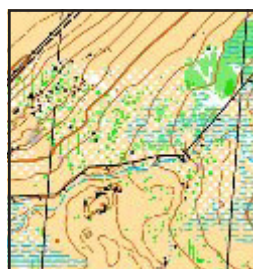
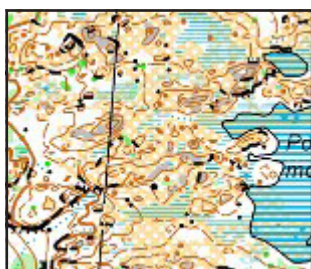


Description: The area is mainly characterized by detached apartment buildings (generally without courtyards), mixed with green spaces and woodland.

Long and middle distance

Map: Gröna Bur/Hagryd Dala, below is two clip from the map.

Description: The area consists essentially of wilderness terrain with several small lakes and many small and medium-sized marshes, both open and vegetated. Plan image have few trails.



Competition Rules

The event will follow the Competition Rules for International Orienteering Federation (IOF) Foot Orienteering Events (January 2013). All competitors shall follow the International Orienteering Federation (IOF) Anti-Doping Rules (February 2010.). Please consult <http://orienteering.org/anti-doping/>.

Punching and Time-keeping System

SPORTident will be used on all events with SI-Card compatible Control Stations. Each runner shall provide the number of their SI-card with the entry. Runners without personal SI-card will get rental SI-cards from the organizers.

Clothing

Competitors must at start have full body cover (excluding head, neck and arms) at the Middle and Long distance. At the sprint distance the organizer permits exceptions to the clothing rule, short trousers and shoulderless shirts are accepted. It is forbidden to use spike shoes in the sprint competition.

Health Services

The organizer will provide basic healthcare service for participants at the competitions. Emergency care and major hospitals are within a 20 minute drive from the long and middle distance and 10 minutes drive from the sprint competition. The Event Organizer will not be responsible for participants medical costs. Each federation is responsible for insurance of all their members.

Transportation to the Competitions

Teams may organize their own transportation between Scandic Mölndal and the arenas.

Technology

GPS tracking will be available at the middle and the long distances for selected runners. Online results and streaming of speaker sound are planned. Ola Jodal will provide commentary at Eurometing 2014.

Visas

Visitors from outside EU/ESS may need a visa to enter Sweden, and the Government's visa information website (<http://www.migrationsverket.se/English/Private-individuals/Visiting-Sweden/Facts-about-visas.html>) provides details of when visas are required.

Schedule for further information

Bulletin 3 will be sent to the national orienteering federations 15th August 2014. Bulletin 3 will be available at the following webpage: <http://goteborg-o-meeting.se/eurometing/>

Entries and entry schedule

There are three deadlines when the entries shall be made. Each deadline has its own webpage, see below.

22nd of July 2014 - Final date for entry of number of runners and team officials, including contact data for team officials.

The registration shall be made at this webpage: <http://survey.euro.confirmit.com/wix/p1835325629.aspx>

12th of August 2014 - Final date for registration of selected runners and team officials.

The registration shall be made at this webpage: <http://survey.euro.confirmit.com/wix/p1835352633.aspx>

17th of August 2014 - Final date for late entries. If there are some teams who want to change runners at the late entries they shall write the runner who don't are participating and its substitute. Questions about the entries shall be sent to the Event director.

The registration shall be made at this webpage: <http://survey.euro.confirmit.com/wix/p1835391066.aspx>

Entry fees and payments

800 SEK per athlete up to 22nd of July 2014

1200 SEK per athlete up to 17th of August 2014

200 SEK accreditation fee team officials

Registration will be accepted when all fees in SEK are paid to the following account:

Account name: GOTEBORG-MAJORNA OK

Bank Address: Nordea, 10571 STOCKHOLM

Account no: 171196-9

SWIFT (BIC): NDEASESS

IBAN: SE66 9500 0099 6026 0171 1969

Note: All bank costs must be covered by payee (Swedish bank transfer cost is SEK 50).